

DMAP Reports - Nanih Waiya WMA - 2022

NRIS ID 6439 DMAP ID 5009

BIOLOGIST Masley COUNTY Neshoba County, MS

ACRES 8040 YEARS ON DMAP 23 SOIL REGION Upper Coastal Plain

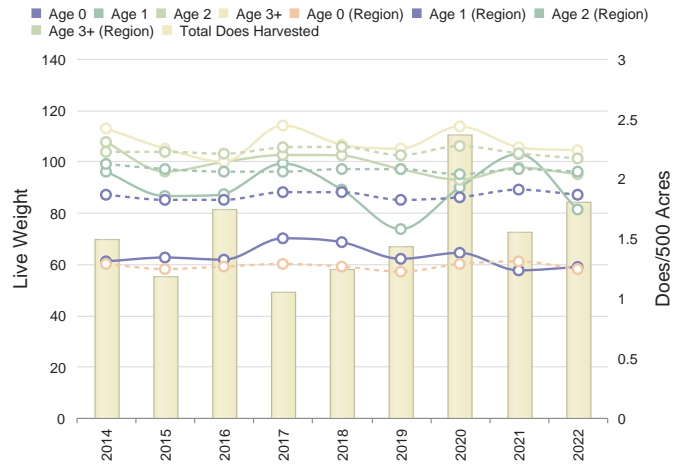
Introductory Comments

Harvest Summary

	Recommended Harvest	Number Harvested	Acres/Deer Harvested	% Data Collected
Bucks	0 - 0	10	804	100
Does	0 - 0	34	236	100
Totals		44	182	100

Comments

Doe Weights with Harvest



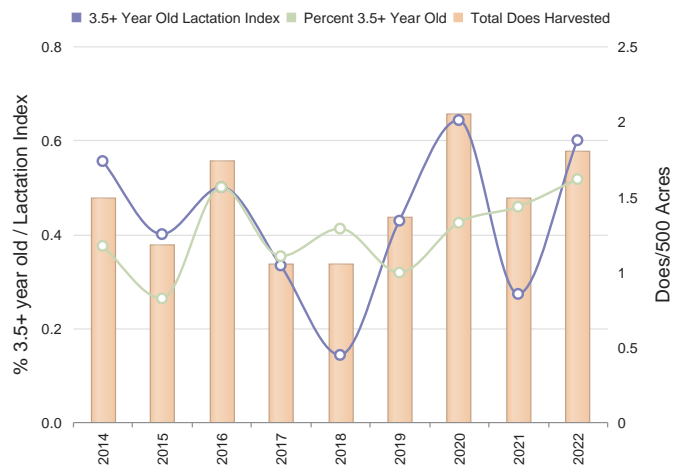
Comments

Harvest History

	Region Avg	2022	2021	2020	2019	2018	2017	2016	2015	2014	2013	2012	2011
Acres	326073	7872	8040	8040	8040	8040	8040	8040	8040	8040	8040	8040	8040
Total Deer	1906.4	54	44	40	72	42	47	35	56	40	43	34	49
Bucks	833.2	17	10	12	31	14	22	14	21	17	10	13	16
Does	1073.2	37	34	28	41	28	25	21	35	23	33	21	33
Acres/Deer	171	144	182	201	111	191	171	229	143	201	186	236	164
Bucks	391	447	804	670	259	574	365	574	382	472	804	618	502
Does	303	212	236	287	196	287	321	382	229	349	243	382	243

Comments

Doe Age Structure in Relation to Harvest and Lactation Rates



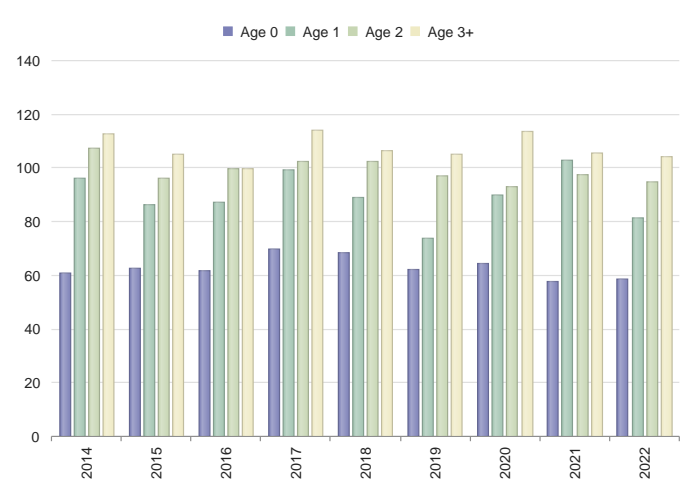
Comments

Buck Harvest History

	Region	Avg	2022	2021	2020	2019	2018	2017	2016	2015	2014	2013	2012	2
Bucks	833.2	18.4	10	12	31	14	22	14	21	17	10	13	16	
Acres/Buck	394.4	526.1	804	670	259	574	365	574	382	472	804	618	502	
% .5 Bucks	4.6	19.9	20	25	9	7	13	N/A	4	N/A	20	7	12	
# .5 Bucks	43.4	3.2	2	3	3	1	3	0	1	0	2	1	2	
Avg Weight	60.0	59.8	83	56	68	45	52	N/A	40	N/A	60	60	75	
% 1.5 Bucks	11.0	15.4	10	N/A	16	14	4	14	14	23	20	15	6	
# 1.5 Bucks	97.2	3.0	1	0	5	2	1	2	3	4	2	2	1	
% Spikes	64.8	70.0	0	N/A	60	0	100	0	0	25	100	100	0	
Avg Weight	100.6	110.6	130	N/A	114	100	139	90	108	107	90	110	125	
Avg Points	2.6	3.2	6.0	N/A	3.4	3.0	2.0	4.0	4.0	4.3	2.0	2.0	4.0	
Avg Base	1.8	2.0	2.0	N/A	2.3	2.0	1.9	3.3	2.5	1.5	1.0	0.8	2.5	
Avg Length	4.8	5.9	9.3	N/A	6.6	6.5	2.6	9.8	10.0	6.6	4.1	1.4	10.0	
Avg Spread	5.7	4.2	4.3	N/A	5.0	4.0	4.0	8.0	2.3	4.9	2.9	1.9	8.0	
% 2.5 Bucks	19.8	33.4	40	8	38	28	45	50	47	52	10	23	43	
# 2.5 Bucks	168.0	6.8	4	1	12	4	10	7	10	9	1	3	7	
Avg Weight	134.4	138.6	164	130	135	143	135	134	137	148	145	151	150	
Avg Points	6.3	6.2	6.5	5.0	6.0	6.0	5.7	6.4	7.2	6.1	6.0	8.0	6.3	
Avg Base	3.2	3.3	3.5	3.3	3.2	3.1	3.4	3.6	3.9	3.4	3.4	3.6	3.3	
Avg Length	13.7	13.3	15.8	12.1	13.9	13.7	13.5	13.0	14.8	13.6	15.5	16.8	13.8	
Avg Spread	11.3	10.4	12.9	9.5	11.5	11.6	10.6	11.0	12.2	11.1	13.0	12.0	9.9	
% 3.5 Bucks	26.4	26.6	10	66	35	35	22	28	19	17	50	38	18	
# 3.5 Bucks	224.8	4.7	1	8	11	5	5	4	4	3	5	5	3	
Avg Weight	147.4	158.5	165	154	146	153	171	138	147	146	160	169	148	
Avg Points	7.3	7.6	8.0	7.6	6.6	7.8	7.4	7.8	8.0	7.0	8.2	8.2	7.3	
Avg Base	3.7	4.0	3.9	3.7	3.5	4.1	3.8	3.6	3.9	4.1	4.3	4.8	4.6	
Avg Length	15.9	16.4	17.6	16.1	16.1	16.2	18.8	15.5	17.4	15.6	16.6	17.3	16.8	
Avg Spread	12.8	13.2	11.0	13.2	12.6	13.1	15.4	12.6	14.3	13.8	14.3	14.6	13.3	
% 4.5+ Bucks	29.0	13.6	20	N/A	N/A	14	9	N/A	N/A	N/A	N/A	15	18	
# 4.5+ Bucks	247.8	2.8	2	0	0	2	2	0	0	0	0	2	3	
Avg Weight	163.6	192.3	175	N/A	N/A	243	326	N/A	N/A	N/A	N/A	185	173	
Avg Points	8.0	7.2	8.0	N/A	N/A	3.0	9.5	N/A	N/A	N/A	N/A	6.5	7.7	
Avg Base	4.2	4.2	3.1	N/A	N/A	2.1	4.4	N/A	N/A	N/A	N/A	4.7	5.3	
Avg Length	17.9	17.7	19.0	N/A	N/A	9.0	19.2	N/A	N/A	N/A	N/A	19.5	18.5	
Avg Spread	14.4	14.1	13.5	N/A	N/A	7.0	17.1	N/A	N/A	N/A	N/A	13.3	17.0	

Comments

Doe Live Weights



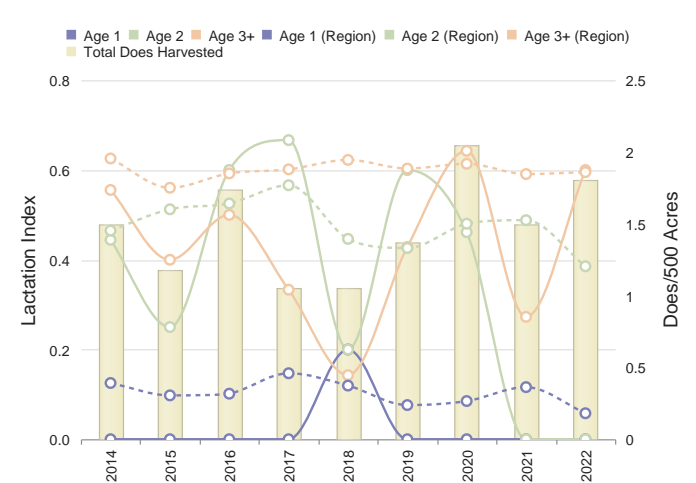
Comments

Doe Harvest History

	Region	Avg	2022	2021	2020	2019	2018	2017	2016	2015	2014	2013	2012	2
Does	1073.2	37.0	34	28	41	28	25	21	35	23	33	21	33	
Acres/Doe	303.8	233.7	236	287	196	287	321	382	229	349	243	382	243	
% .5 Does	8.0	16.0	14	10	7	17	16	19	17	8	24	14	15	
# .5 Does	90.8	6.1	5	3	3	5	4	4	6	2	8	3	5	
Avg Weight	59.0	61.3	58	57	64	62	68	70	61	62	61	73	57	
% 1.5 Does	17.6	23.6	23	28	14	35	28	23	25	43	18	23	24	
# 1.5 Does	194.0	8.7	8	8	6	10	7	5	9	10	6	5	8	
Avg Weight	87.0	89.1	81	102	89	73	89	99	87	86	96	95	97	
% 2.5 Does	16.6	20.4	17	17	34	17	20	28	14	17	27	4	15	
# 2.5 Does	182.2	8.0	6	5	14	5	5	6	5	4	9	1	5	
Avg Weight	96.4	102.6	95	97	92	97	102	102	99	96	107	141	116	
% 3.5+ Does	51.4	36.2	44	42	43	28	32	28	40	21	27	47	42	
# 3.5+ Does	558.2	13.7	15	12	18	8	8	6	14	5	9	10	14	
Avg Weight	103.0	108.0	104	105	113	104	106	113	99	105	112	110	106	
% Lactation	N/A	-												
1.5	6.0	19.3	0	0	0	0	20	0	0	0	0	0	0	
2.5	39.0	41.7	0	0	46	60	20	67	60	25	44	0	60	
2.5+	55.0	42.3	43	19	56	50	17	50	53	33	50	9	47	
3.5+	60.0	47.9	60	27	64	43	14	33	50	40	56	10	43	

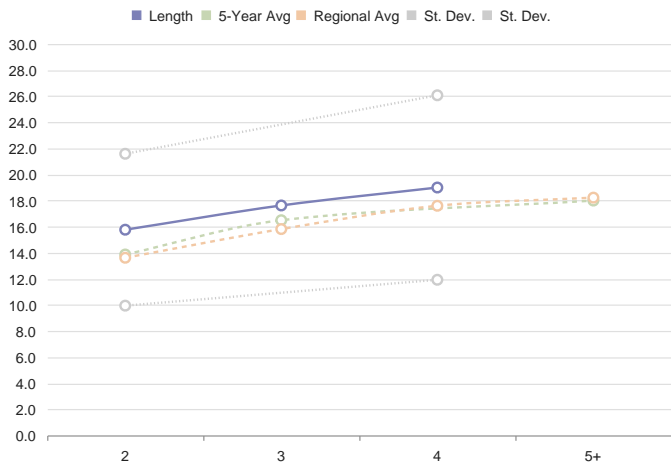
Comments

% Doe Lactation



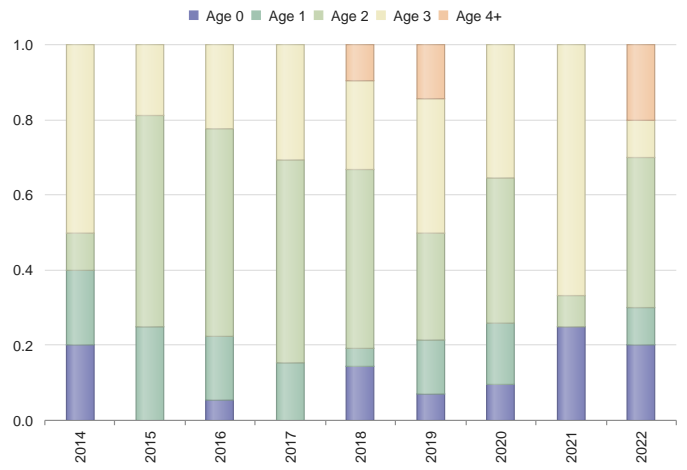
Comments

Main Beam Lengths by Age



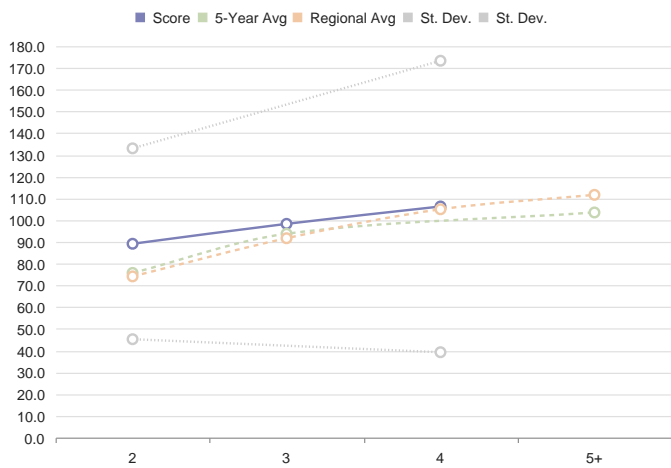
Comments

% Bucks by Age Class



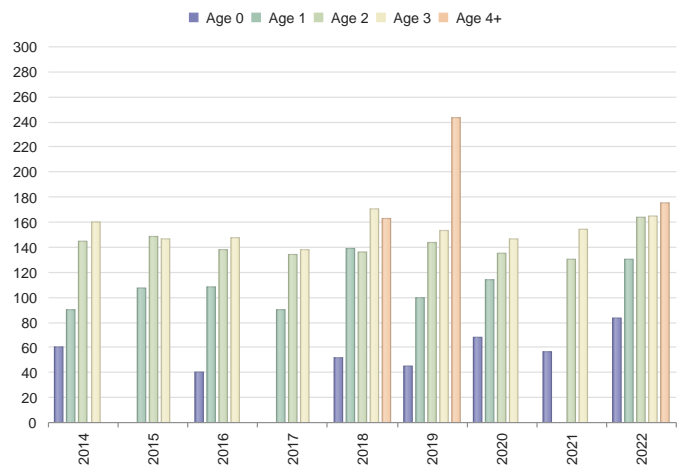
Comments

Criteria B&C Score by Age



Comments

Buck Live Weights



Comments

Criteria Buck Estimated B&C Scores

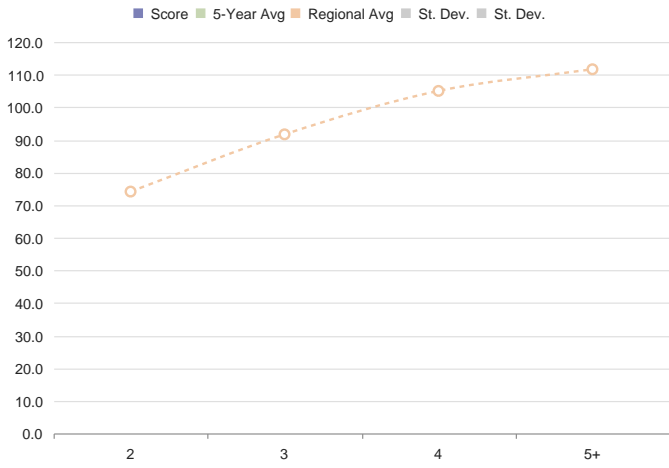
Age	Num	Estimated Non-typical B&C Score		
		At Harvest	At Maturity (Min)	At Maturity (Max)
2.5	4	89 1/8	120 4/8	145
3.5	1	98 2/8	113	125 2/8
4.5	2	106 2/8	109 5/8	116 1/8
5.5+	0	0	0	0

Comments

Attachments

Attachments

Management Buck B&C Score by Age



Comments

Minimum Number Known Alive (MNKA)

	2022	2021	2020	2019	2018	2017	2016	2015	2014	2013	2012	2011	201
Reconstructed Bucks	-	-	-	-	-	53	55	53	47	37	37	45	54
Reconstructed Does	-	-	-	-	-	83	85	83	93	74	84	97	133
Buck Harvest	-	-	-	-	-	14	21	17	10	13	16	17	22
Doe Harvest	-	-	-	-	-	21	35	23	33	21	33	41	60
% Harvested	-	-	-	-	-	26	40	29	31	31	40	41	44

Comments

