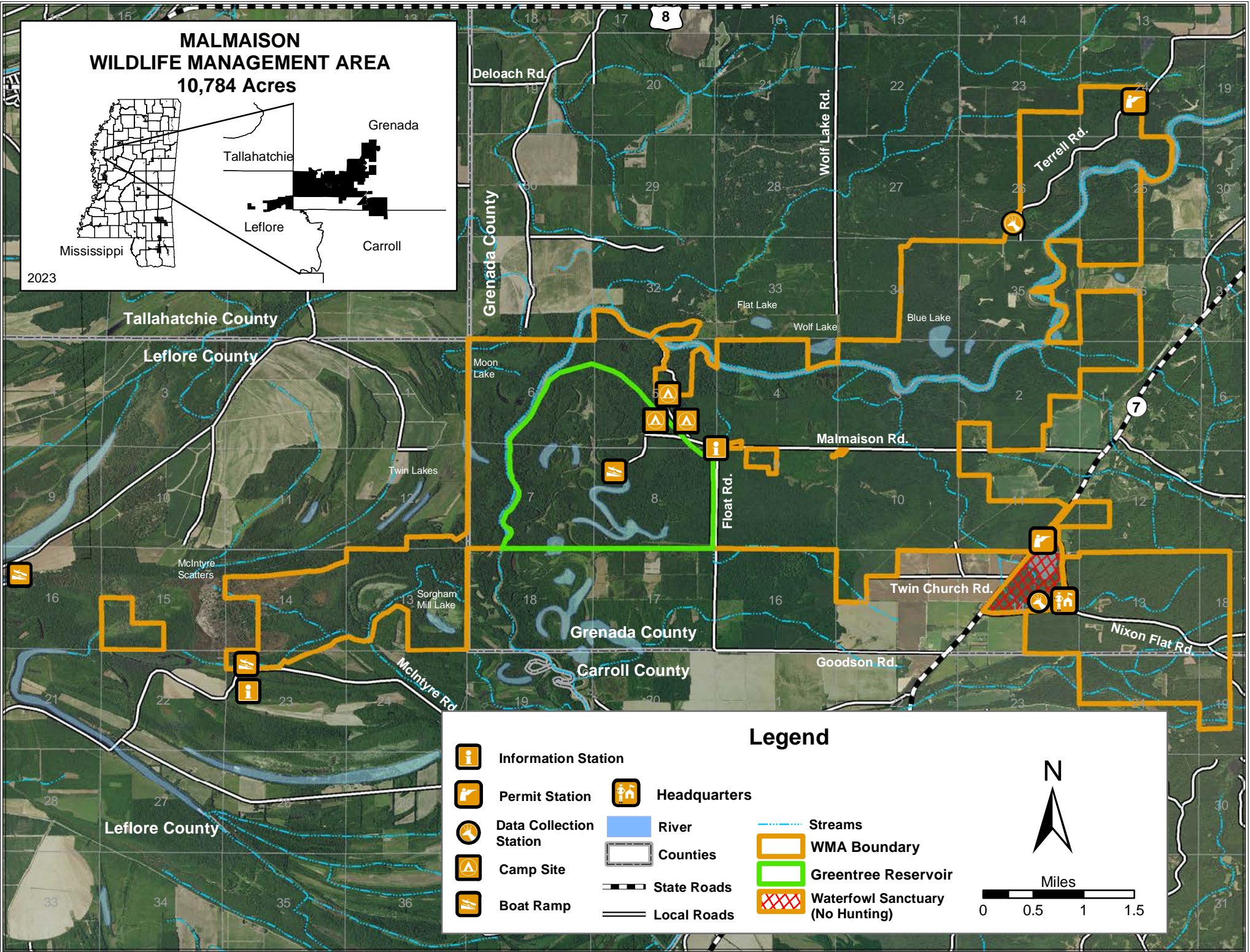
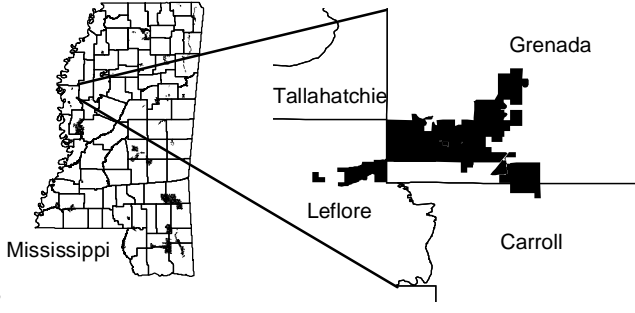


# MALMAISON WILDLIFE MANAGEMENT AREA 10,784 Acres

2023



## Legend

- |  |                         |  |              |  |                                  |
|--|-------------------------|--|--------------|--|----------------------------------|
|  | Information Station     |  | Headquarters |  | Streams                          |
|  | Permit Station          |  | River        |  | WMA Boundary                     |
|  | Data Collection Station |  | Counties     |  | Greentree Reservoir              |
|  | Camp Site               |  | State Roads  |  | Waterfowl Sanctuary (No Hunting) |
|  | Boat Ramp               |  | Local Roads  |  |                                  |

